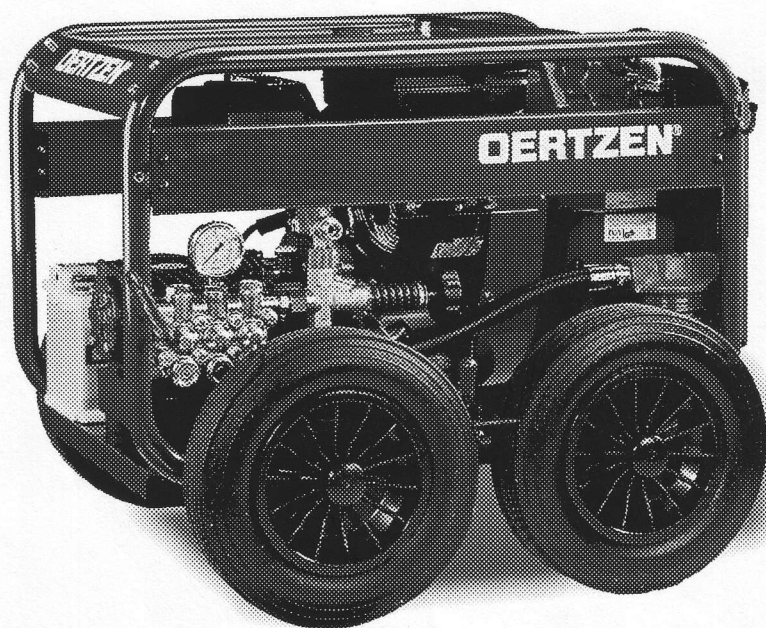


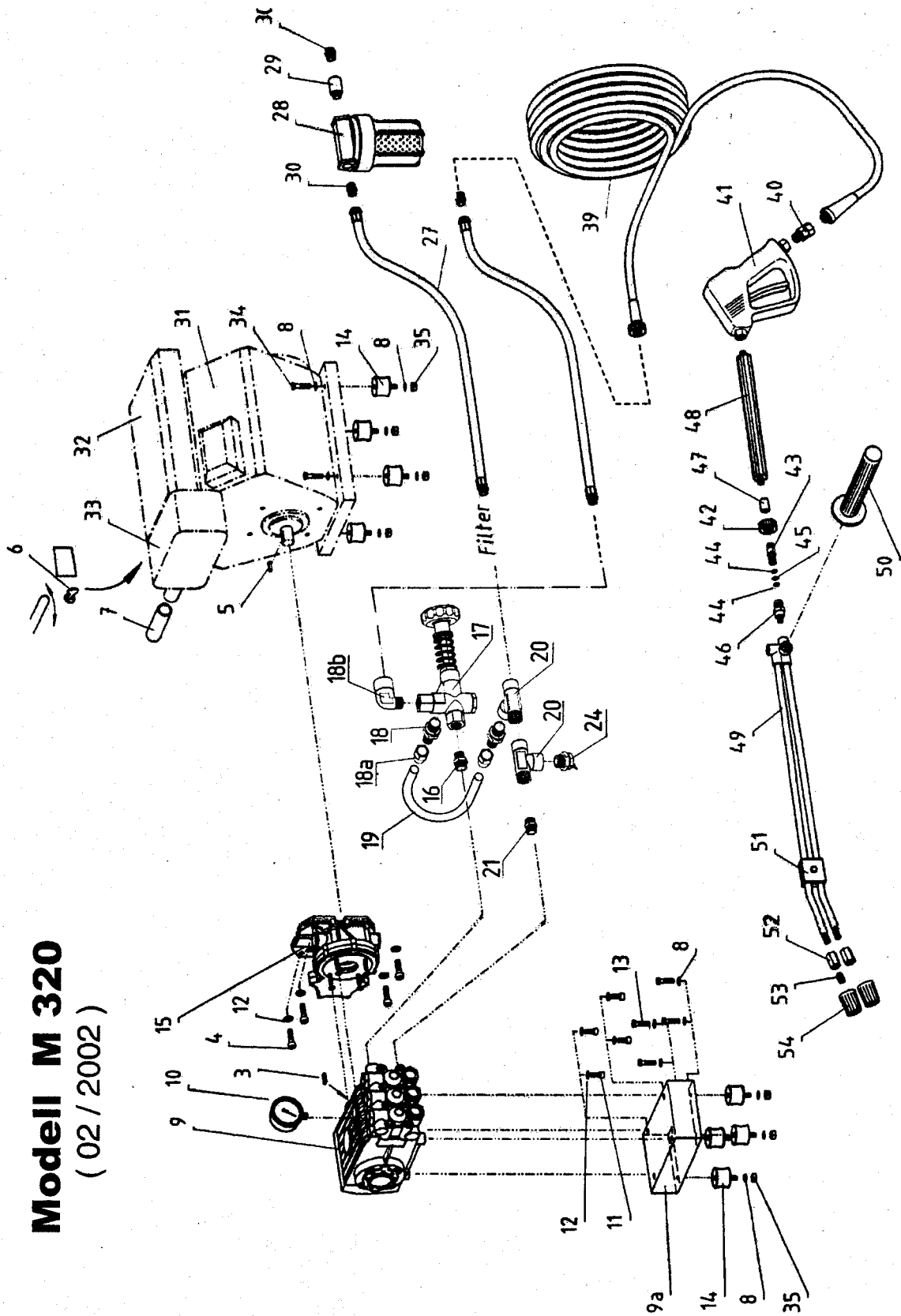
# Ersatzteilliste M 320

## Spare Parts List M 320



### Index

- Nr. 3025 Motor-Pumpe-Wasserführung  
Motor-Pump-Waterline
- Nr. 3026 Rahmen / Frame
- Nr. 3006 Umlaufventil / Unloader valve
- Nr. 4508 Pumpe / Pump



**Modell M 320**  
( 02 / 2002 )

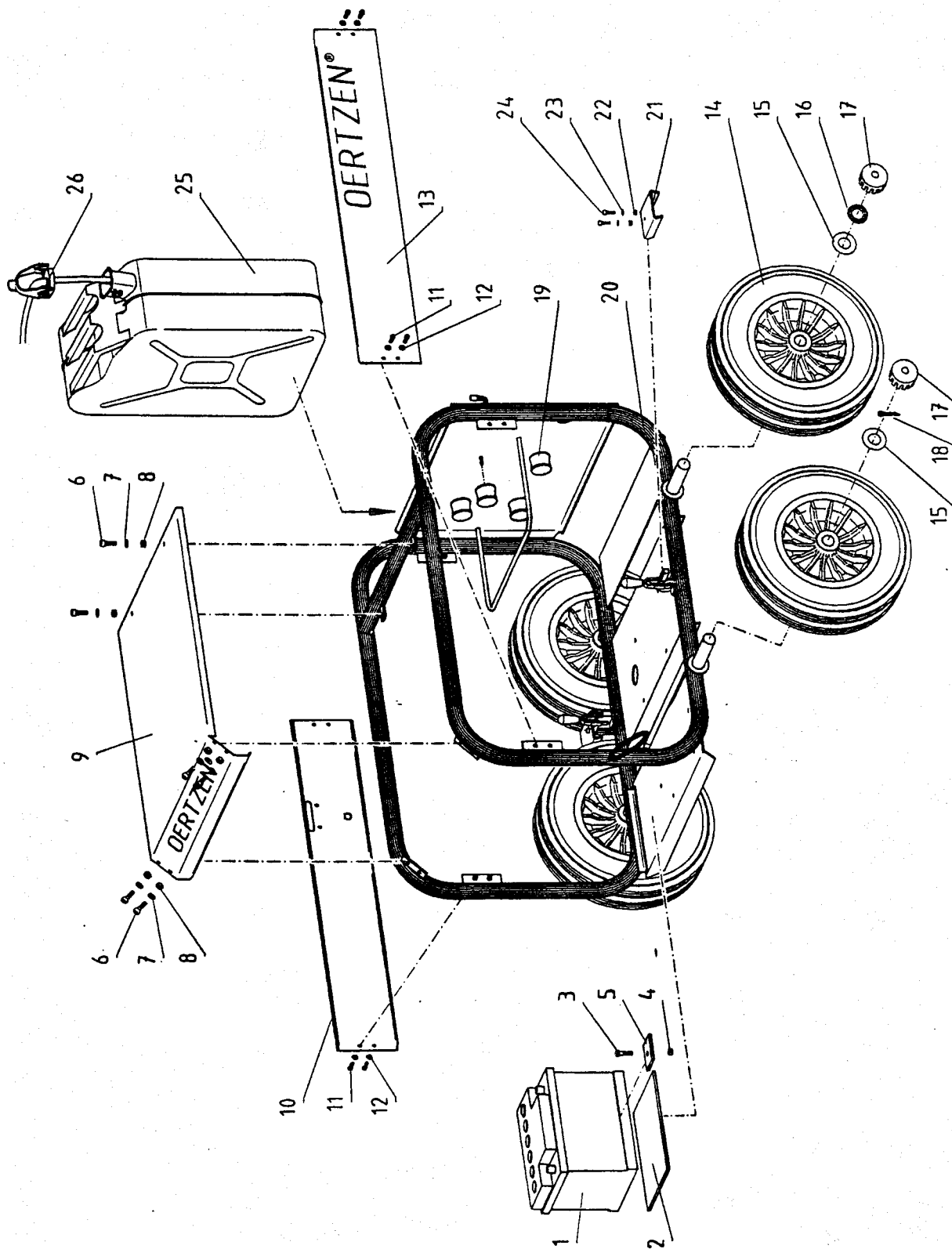
Pos. Pos.	Nummer Part #	Stk pcs	Bezeichnung	Description
3	10217132	1	PASSFEDER 8x7x25 UNI6604/A	Key 8x7x25
4	10220114	4	SCHRAUBE 5/16"x1"x24UNF	Bolt 5/16" x 1" / 24gg.
5	31992004	1	KEIL (LANG) (60,3 MM)	Extended Key (60,3mm)
6	31692318	1	ZUENDSCHLOSS M300/M320/HDL	Ignition Switch M300/M320/HDL
6a	31691959	1	ZUENDSCHLUESSEL MOBIL-GERAETE	Ignition Key B&S Vanguard
6b	31692105	1	GASHEBEL/-ZUG 323/240/300M/HDL	ThrottleLever w.Cord Mobil/HDL
8	10006314	8	FEDERRING A 8 VZ	Lock Washer A 8
9	16000002	1	HD-PUMPE 221/310bar Brz. 1.450	HP-Pump 221/310bar Bronz 1.450
9a	10100003	1	PUMPENKONSOLE 323/300M/HDL250	Pump Base 323/300M/HDL250
10	10406040	1	STANDMANOMETER 0-400bar K	Pressure Gauge 0-400 bar(Glyc)
11	10006023	8	INBUSSCHRAUBE M10x 16	Allen Screw M 10 x 16
12	10217003	8	SCHNORRSCHLEIBE 8,4	Schnorr Disc 8,4
13	15000109	8	SECHSKANTSCHRAUBE M 8x 20	Hex Bolt M 8 x 20
14	10102277	8	MEGI-PUFFER M 8 i/a 40x30mm	Rubber Mount M8 ID/OD
15	16000122	1	UNTERSETZERGETRIEBE 18kW 2,2:1	Reduction Gearbox 16kW 2,2:1
15a	16160306	1	OELSCHAUGLAS 1/2"	Oil Eye 1/2"
16	10004035	1	SCHWERLASTNIPPEL 1/2"x3/8" VA	Reduct Nipple 1/2"x3/8"
17	10304351	1	HD-STEUERVENTIL 801/min-300bar	HPUnloader 801/min-300bar blue
18	10003012	2	REDUZIERSTUECK 1/2"Mx3/8"W MS	Reduct. Piece 1/2"x3/8" Brass deleted/entfällt
18a				
18b	10005002	1	WINKEL 3/8" MW 300bar PMS	Elbow 3/8" MF 300bar ForgedBr
18c	11030134	1	EINSCHRAUBNIPPEL 1/4"xM16x1,5K	Male Stud Connect.1/4"xM16x1,5
19	10701067	1	UMLAUF SCHLAUCH 323/300M/HDL250	UnloaderHoseM323/300/HDL250
20	10005073	2	T-STUECK 3/8" Mww 300bar PMS	Tee 3/8" MFF 300barForgedBrass
22	10003013	1	REDUZIERSTUECK 3/4"Mx1/2"W MS	ReductionPiece 3/4"Mx1/2"F Brs
24	10306091	1	THERMOVENTIL 60°C n.A.KURZ	Therموvalve 60°C/140°F (new)
24a	10306089	1	RUECKSCHLAGVENTIL f10306091/94	Check-Valve for 10.306.091/094
25	10003016	1	REDUZIERSTUECK 1/2"Mx1/4"W MS	Reduction Piece 1/2"Mx1/4"F MS
26	10702123	1	PANZERJET 0,59m M300/M320	PANZERJET Hose 0,59m 600bar
27	10701030	1	VERBINDUNGSSCHLAUCH 300M	Connecting Hose 300 mm
28	10000963	1	MICROFILTER F. 5"FILTERKERZ/ENTL	Micro Strainer 5" (new)
28a	10000954	1	FILTERGLAS 5"WEISS F.10000963	Filter Bowl 5" White/10000963
28b	10000941	1	FILTERKERZE 5" 50µ ( 1STCK)	Filter Cartridge 5"/50µ 1 pc
28c	10000965	1	FILTERKERZE 5" 50µ ( 5STCK)	Filter Cartridge 5" 50µ 5 pcs
28d	10000966	1	FILTERKERZE 5" 50µ (10STCK)	Filter Cartridge 5" 50µ 10 pcs
29	10003039	1	HAHNVERLAENGERUNG 3/4"x 50	Tap Extension 3/4"x 50
30	10003004	2	DOPPELNIPPEL 3/4" MM KURZ MS	Double Nipple 3/4" short Brass deleted/entfällt
30a				
31	31380447	1	VANGUARD 22PS/16,2kw V-MOTORaA	Vanguard V-Engine 22HP/E-Start
32	31394018	1	LUFTFILTEREINSATZ 240/300M/HDL	Air Filter Insert 240/300/323M
33	31808680	1	AUSPUFF VANGUARD 22PS MITTIG	Exhaust Muffler M320 (central)
34	10006145	1	SECHSKANTSCHRAUBE M 8x 35	HexBolt M 8 x 35
35	15028108	1	STOPMUTTER M 8	Lock Nut M 8
39	10702064	1	PANZERJET 10m SCHL.600bar ISO	PANZERJET HPHose 10m 600barISO
	10702065	1	PANZERJET 15m SCHL.600bar ISO	PANZERJET HPHose 15m 600barISO
	10702066	1	PANZERJET 20m SCHL.600bar ISO	PANZERJET HPHose 20m 600barISO
40	10708050	1	ENTDRALLUNGSGELENK 330bar MS	HP-Hose Swivel 330bar
41	10700001	1	HD-SICH-PISTOLE 330barISOGRIF	HP-Safety Pistol 330bar,w.Grip 41-48
42	10703130		HV-MUTTER ROT MS OE2/330bar	Hand Nut M22x1,5 330bar
43	10700110		STECKNIPPEL DREHB.1/4"A MAENNL	Male Nipple rotatable 1/4"M

Ersatzteilliste / Spare Part List  
 Typ/Baugrp. M320 MOTOR PUMPE WASSERFÜHRUNG  
 Model/Group M320 Engine Pump Waterline

Nr. 3025  
 Seite 2  
 Datum 13-02-02



Pos. Pos.	Nummer Part #	Stk pcs	Bezeichnung	Description
44	10703128		O-RING 10,00x2,00 (10 Stck.)	O-Ring 10x2 (pack of 10)
45	11200117		BACKUP-RING TEFLON 10,7x14/1mm	Back-up Ring Teflon
46	10700100		WECHSELNIPPEL 1/4"A WEIBL.DREH	Female Nipple rotatable 1/4"M
47	10002067		MUFFE 1/4" WW STVZ	Sleeve 1/4"
48	10704115		ISOL.GRIFFSTUECK (VA) 300mm	Insulated Handle 300mm INOX
49	10700022	1	DOPPELLANZE 660mm/DRUCKREG. VA	DoubleWand 660mm/Pressreg. INOX 49-54
51	11260537		KLAMMER F.DOPPELLANZE	Clamp f. Double Lance
52	10710100		DUESENTRAEGER MIT SCHUTZKAPPE	Nozzle Holder w. Prot.Cap
53	10742038		HIP-STRAHLDUESE 2038(055)	HIP-Nozzle 2038(055)
54	10710102		DUESENSCHUTZ 2-TEILIG	Nozzle Protection (2parts)



## Ersatzteilliste / Spare Part List

Nr. 3026

Typ/Baugrp. M320 RAHMENANLAGE

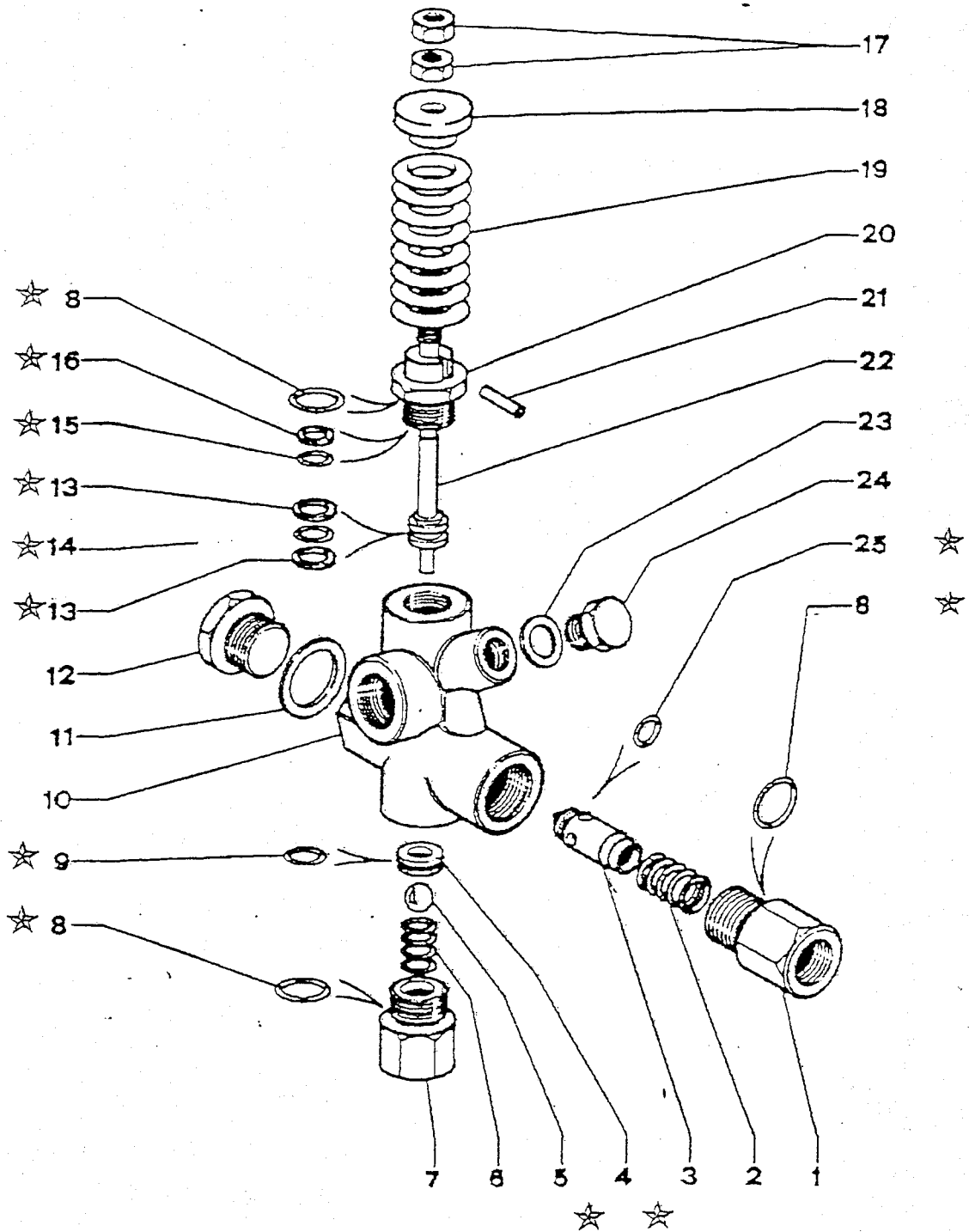
Seite 1

Model/Group M320 Main Frame Arrangement

Datum 14-02-02

**OERTZEN®**... for a cleaner world 

Pos. Pos.	Nummer Part #	Stk pcs	Bezeichnung	Description
1	10501060	1	BATTERIE 12V/ 44AH VIBRAT.FEST	Battery 12V/44AH Vibrat.proof
	10501058	1	BATTERIE-POLKAPPE	Battery Pole Cover
2	10501061	1	GUMMIUNTERLAGE F.BATTERIE	Battery Rubber Lining
3	10006141	1	SECHSKANTSCHRAUBE M 8x 30	Hexagon Bolt M 8 x 30
4	15028108	1	STOPMUTTER M 8	Lock Nut M 8
5	10100002	1	NIEDERHALTEBLECH BATTERIE	Battery Clamp
6	15000235	6	INBUSSCHRAUBE M 8x 15	Allen Screw M 8 x 15
7	10006314	6	FEDERRING A 8 VZ	Lock Washer A 8
8	10006304	6	SECHSKANTMUTTER M 8	Hexagon Nut M 8
9	10102281	1	STIRNBLECH LANG M320	Potection Panel M320
10	10102269	1	SEITENBLECH 300/320M LINKS	Side Cover 300/320M Left
11	10006131	8	SECHSKANTSCHRAUBE M 6x 20	Hexagon Bolt M 6x 20
12	10006313	8	FEDERRING A 6 VZ	Lock Washer 6mm Zinc plated
13	10102268	1	SEITENBLECH 300/320M RECHTS	Side Cover 300/320M Right
14	10102208	4	RAD 350mm 300M/500E/HDL250	Wheel 350mm 300M/500E/HDL
15	10102209	4	RADKAPPENSATZ CPL. m.SCHEIBEN	Wheel Clip Kit 15-17
18	10006510	1	SPLINT 4,0x40 DIN 94	Cotter 4x40 steel galv.
19	10102272	4	MEGI-SCHWINGFUSS M 6i 25x15mm	Rubber Mount 25x15mm soft M6
20	10102280	1	RAHMENANLAGE M320	Frame M320
21	10102216	2	BREMSPLATTE	Brake Element 300M
22	10006303	4	SECHSKANTMUTTER M 6	Hexagon Nut 6mm metric
23	10006313	4	FEDERRING A 6 VZ	Lock Washer 6mm Zinc plated
24	10006132	4	SECHSKANTSCHRAUBE M 6x 25	Hexagon Bolt M 6x 25 metric
25	10601125	1	KRAFTSTOFFKANISTER 20l NATO	Fuel Tank (NATO-Standard) 20 l
26	10601026	1	NATO-TANKANSCHLUSS 300M/HDL	Change-Over TankLid NATO 300M
	10802002		SPEZIAL-HYPOID-PUMPENÖL OSP;5L	1,2l Pump + 0,3l ReductionGear OSP Special Pump Oil 5l/1,3USG 1,6 l
	10802006		OSM SPEZIAL-MOTORENÖL (5l GEB)	OSM Special Engine Oil 5l Can
	10601036	2	LABEL "OERTZEN" 278mm	LABEL "OERTZEN" 278mm
	10601060	1	LABEL "STRAHL-WARNHINWEIS"	Label "Blaster - Warning"
	10601039	1	LABEL "VERBRENNUNGSGEFAHR"	Label "Hot Surface"
	10601040	1	LABEL "SICHERHEIT.." 100x35mm	Label "Safety .." 100 x 35 mm

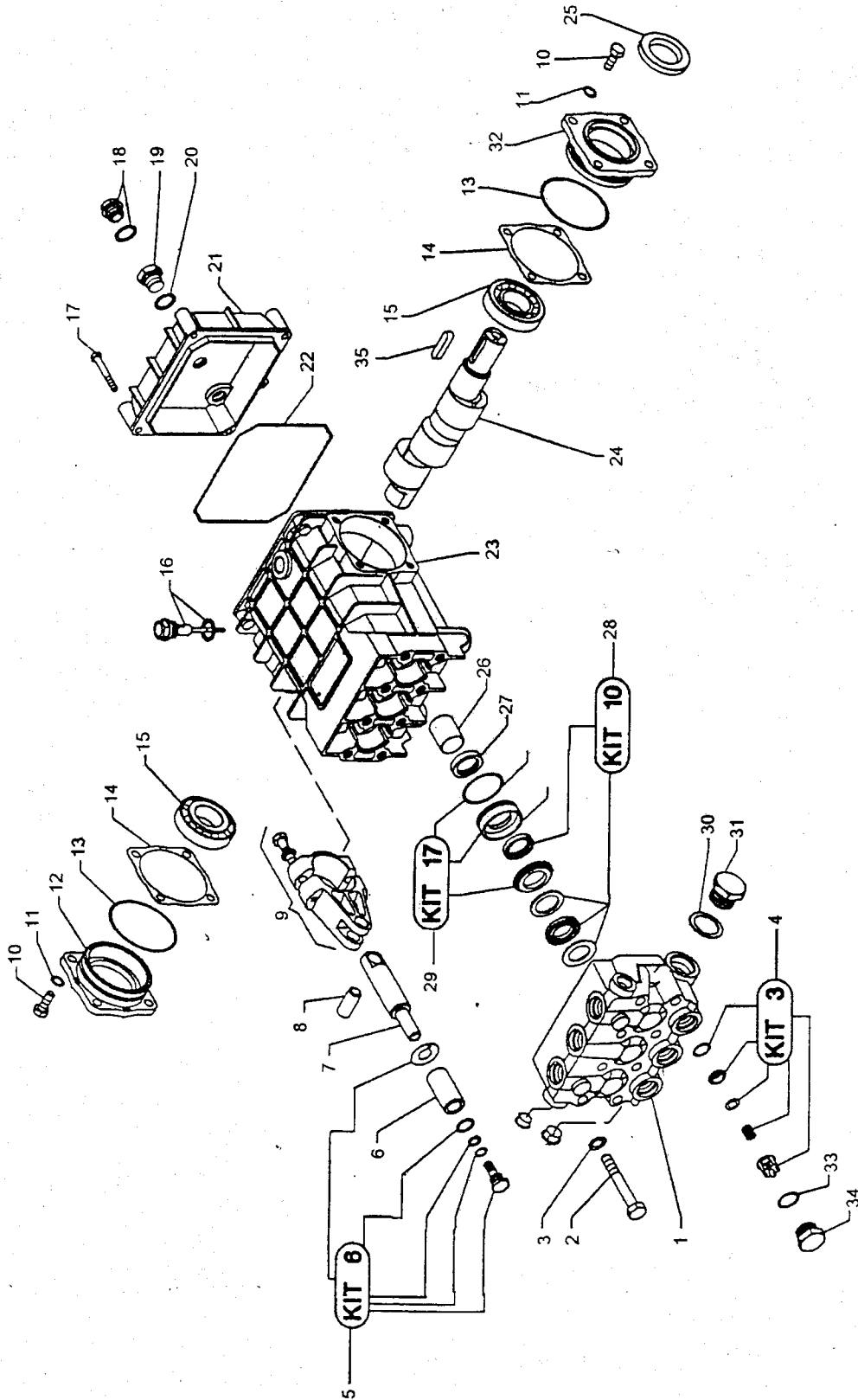


☆ Reparatur-Kit Rep.Kit:  
Umlaufventil/Unloader Valve 300bar

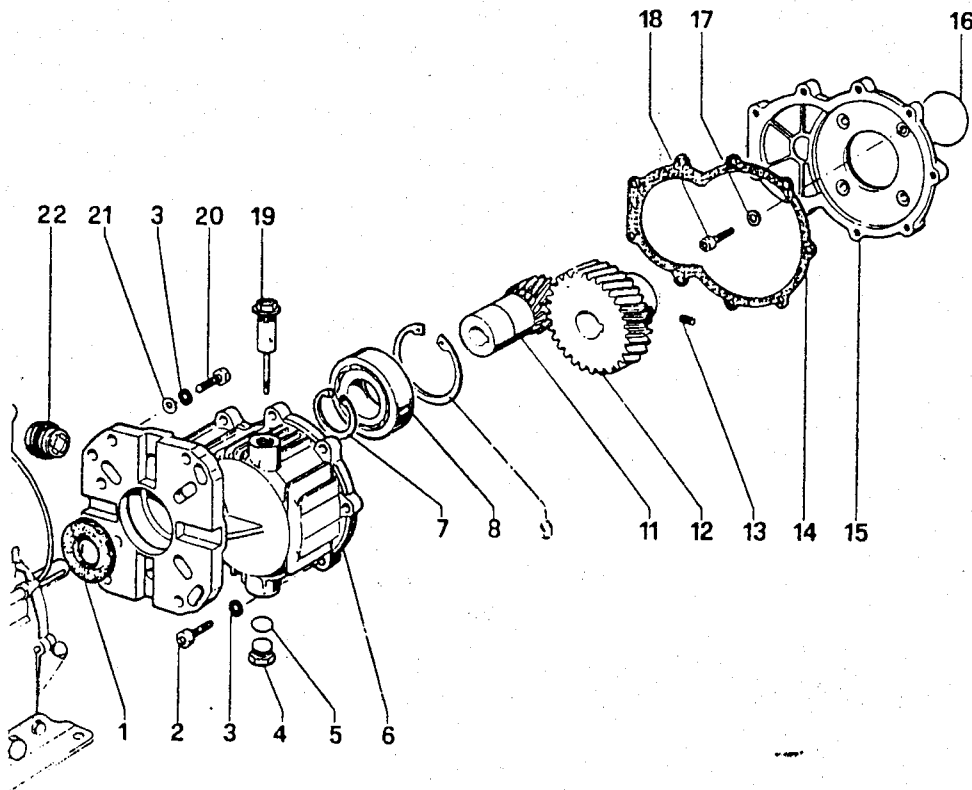
Best.Nr./Order No. 10.304.354  
Best.Nr/Order No. 10.304.351

Pos. Pos.	Nummer Part #	Stk pcs	Bezeichnung	Description
	10304351	1	HD-STEUERVENTIL 80L/MIN-300bar	HPUnloader 80l/min-300bar blue
1	10304382	1	FUEHRUNGSSCHRAUBE	Guiding Screw
2	10304380	1	FEDER	Spring
3	10304383	1	RUECKSCHLAGVENTIL	Non-Return Valve
6	10304377	1	FEDER	Spring
7	10304384	1	ANSCHLUSSNIPPEL BYPASS	Connection Nipple By-pass
8	10226446	1	O-RING 20,35x1,78 Sonder	O-Ring 20,35 x 1,78 90sh
11	10304385	1	DICHTRING	Seal Ring
14	10226441	1	VENTILGEHAEUSE 300E	Valve Housing 300 E
18	10304372	1	FEDERLAGER	Spring Centering Disk
19	10304387	1	FEDER (BLAU) f. 10304351	Spring (Blue) 315bar
20	10304388	1	FUEHRUNGSSCHRAUBE	Guiding Screw
21	10304374	1	STIFT	Pin
22	10304389	1	KOLBENSTANGE	Piston Rod
23	10304390	1	HANDRAD	Hand Wheel
25	10304391	1	O-RING 8,00x4,00 Sonder	O-Ring 8,00 x 4,00
4-25	10304354		TEILE-KIT F.10304350/1	Repair Kit for 10304350/1





Pos. Pos.	Nummer Part #	Stk pcs	Bezeichnung	Description
	16000002		HD-PUMPE 221/310bar Brz. 1.450	HP-Pump 221/310bar Bronz 1.450
	16000003		HD-PUMPE 221/310bar Brz. 1.740	HP-Pump 221/310bar Bronz 1.740
1	16160477	1	VENTILGEHAEUSE E 320	Valve Housing
2	16180425	8	SCHRAUBE	Screw
3	16141103	8	SCHEIBE	Washer
4	16999003	1	REP.SATZ VENTILE < 301/min	RepKit Valves < 301/min
5	16999006	3	REP.SATZ PLUNGERSCHRAUBE (3x)	RepKit Plunger Bolt (3 sets)
6	16120532	3	KERAMIK-PLUNGER 22mm E320	Plunger
7	16001419	3	FUEHRUNGSKOLBEN E320/334/340	Guiding Piston E320/334/340
8	16150214	3	PLEUELBOLEN E250/E320/334/400	Conn.Rod Bolt E250/320/334/420
9	16600052	3	PLEUEL CPL E320E334E400 BRONZE	Connecting Rod cpl. E320 Brz.
10	16180482	8	SCHRAUBE	Screw
11	16140310	8	SCHEIBE	Washer
12	160501C6	1	LAGERDECKEL	Bearing Cover
13	10220009	2	O-RING 67,95x2,62 Sonder	O-Ring 67,95x2,62 70sh
14	16153403	2	DISTANZSCHEIBE	Lining
15	16024803	2	LAGER	Bearing
16	16605826	1	OELPEILSTAB, DICHTRING	Oil Dip Stick w. Gasket
17	16180452	4	SCHRAUBE	Screw
18	16160333	1	OELSCHAUGLAS 3/8" (<05/01)	Oil Eye 3/8" (<05/01)
18b	161603B8	1	OELSCHAUGLAS 3/4" (>04/01)	Oil Eye 3/4" (>04/01)
19	16160302	1	ABLASSSCHRAUBE	Drain Plug
20	16060543	1	DICHTUNG	Gasket
21	16020871	1	GETRIEBEDECKEL	Gear Cover
22	10226315	1	O-RING 22,22x2,62	O-Ring 22,22 x 2,62
23	16020954	1	PUMPENGEHAEUSE	Crankcase
24	16002829	1	KURBELWELLE E320/50Hz	Crankshaft E320/50Hz
	16002852	1	KURBELWELLE E320/60Hz	Crankshaft E320/60Hz
25	16000738	1	WEDI 30x52x 7	Shaft Seal Ring
26	16011508	3	BUCHSE	Bushing
27	16000743	3	WEDI 22x32x 7	Piston Seal Ring
28	16999010	1	REP.SATZ MANSCHETTEN E250/E320	RepKit Seal E250/E320
29	16999017	3	REP.SATZ HARDPARTS 22mm (3x)	RepKit Hard Parts (3 sets)
30	16060509	1	DICHTUNG	Gasket
31	16160364	1	STOPFEN 3/8" MS	Plug
32	160501C7	1	LAGERDECKEL	Bearing Housing
33	10226315	6	O-RING 22,22x2,62	O-Ring 22,22 x 2,62
34	16160393	6	VENTILSTOPFEN	Valve Plug
35	16080117	1	PASSFEDER 7x8x35	Key
	16999003	1	REP.SATZ VENTILE < 301/min	RepKit Valves < 301/min
	16999006	1	REP.SATZ PLUNGERSCHRAUBE (3x)	RepKit Plunger Bolt (3 sets)
	16999010	1	REP.SATZ MANSCHETTEN E250/E320	RepKit Seal E250/E320
	16999017	1	REP.SATZ HARDPARTS 22mm (3x)	RepKit Hard Parts (3 sets)



Pos. Pos.	Nummer Part #	Stk pcs	Bezeichnung	Description
	10220100		UNTERSETZERGETRIEBE 14KW/2,2:1	Reduction Gearbox 14kW/2,2:1
1	10220104	1	WEDI 40x55x 7 HT	Seal Ring S 40x55x7 HT
2	10217142	9	INBUSSCHRAUBE M 8x 30	Allen Screw M 8 x 30
3	10217003	13	FAECHERSCHEIBE A8,4x13x0,8	Lock Washer 8,4x13x0,8
4	10226026	1	STOPFEN 3/8" PUMPE MS	Brass Plug 3/8" Pump
5	10226025	1	O-RING 13,95x2,62 Sonder	O-Ring 13,95 x 2,62
6	10220107	1	GETRIEBEGEHAUEUSE 240/300M/HDL	Housing
7	10220108	1	SPRENGRING	Retainer Ring
8	10220116	1	SPHAER.LAGER SQ 6208	Bearing SQ 6208
9	10220117	1	SPRENGRING	Retaining Ring
11	10220109	1	ANTRIEBSRITZEL 17Z	Drive Gear 17Z
12	10220110	1	GEGENRITZEL GROSS 37Z	Counter Gear large 37 teeth
13	10217145	1	MADENSCHRAUBE M 8x 10/12K	Hollow Set Screw M 8 x 10/12 K
14	10220103	1	GEHAEUSEDICHTUNG GETRIEBE 300M	HousingGasket RedGear 300M/HDL
15	10220102	1	GETRIEBEBEDECKEL F.GETR.323M	Gear Box Cover (300 M)
16	10220111	1	O-RING 58,62x2,62 Sonder	O-Ring 58,62 x 2,62
17	10220105	4	UNTERLEG-DICHTSCHEIBE GETRIEBE	Seal Washer Red.Gearbox 300Mpp
18	10220112	4	INBUSSCHRAUBE M.MEGI-RING(IAD)	Allen Screw w. Gasket
19	10220025	1	OELPEILSTAB	Oil Dip Stick
20	10220114	4	SCHRAUBE 5/16"x25,4mm/24GG.	Bolt 5/16" x 1" / 24gg.
21	10220115	4	SCHEIBE	SCHEIBE
22	10217128	1	OELSCHAUGLAS	Oil Eye